

## F9 Products and Solutions for Paint and Coating Removal

Protube Engineering supplies a range of high-quality machines, spares and wear items for the removal of paint and coatings via induction heating.

### HOW IT WORKS

Using induction heating to remove coatings has been an EFD Induction application for many years. Induction exploits the laws of electromagnetism to generate controllable heat.

The process is completely free from contaminants such as abrasives and blast media.



### **A BETTER TECHNOLOGY**

- Faster, cleaner, safer, quieter operation
- User-friendly controls
- Minimizes fumes & toxic dust
- Eliminates workspace masking and encapsulation
- Much easier clean-up
- Rugged & reliable
- Light weight, easy to move around worksites

### **METHOD FLEXIBILITY**

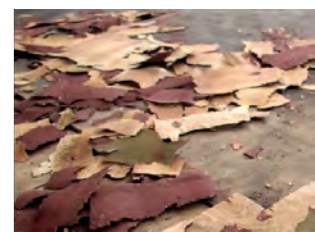
- Spot heating
- Scanning
- Freehand
- Semi-automatic

### **USED IN MANY INDUSTRIES**

- Ships / Marine
- Buildings
- Storage tanks
- Pipelines
- Bridges
- Offshore

### **NO LIMITATIONS**

- Flat surfaces
- Round contours
- Inside/outside corners
- Both sides of substrate
- Round rivets
- Etc.



## **OUTPERFORMING TRADITIONAL METHODS**

Induction heating can outperform traditional paint-stripping methods.

Abrasive blasting or disk grinding are generally more labour intensive and come with other issues such as the cost of enclosure or containment and collection of blast media plus the filtration or separation of the coating materials for disposal.



The Coating Removal System efficiently removes industrial coatings of almost any thickness. Contractors and operators report a significant time-saving - up to 90% reduction in time required to remove tough, high-build coatings.

## **EASY-TO-USE**

The Coating Removal System arrives at the job site start-up ready. Just plug the unit into the site's AC power supply, connect the cooling hoses and choose which inductor you want to use. Once fitted, the clear, menu-based and multi-language control panel ensures maximum ease-of-use. Portable Coating Removal Systems are compact and light-weight. No need for long cable runs, because the heating generator is close to the working area.

## **LOW MAINTENANCE**

Coating Removal Systems and components are built to sustain rugged worksite conditions and ambient temperature extremes. The solid-state power supply is designed to operate for at least 20 years, running continuously at 100% duty cycle.

## **ECO AND ENERGY FRIENDLY**

EFD Induction is committed to providing high performance solutions which minimise the environmental impact of your project. Our Coating Removal System is a prime example as it offers:

- Safer working environment. The controlled, localized heat results in significantly reduced fumes and toxic dust.
- Easy clean-up. The coating material mainly peels off in flakes rather than being pulverized.
- Noiseless operation. Operators can work in public areas without creating a disturbance.
- Reduced energy consumption. Fast, easy, accurate and repeatable heat delivery makes the coating removal process extremely energy efficient.

## OPTIONS

- **Single Removal System:** Can be used by one operator at a time.
- **Twin Removal System:** Can be used by two operators simultaneously.
- **Complete Solution in Transport Container:** Either the Single or Twin Removal System can be installed in a rugged transport container which can be transported around easily for jobs offsite.
- **Extended Cables:** The standard cable length is 15m however it is possible to extend this by 20m 3 times for a total length of either; 15m, 35m, 55m or 75m.

